

AXLE PRODUCTS

Quality ABS
Chrome and
Stainless Steel
Axle Cover
Kits, featuring
our exclusive
chrome plating
finish and grade
304 stainless
steel. Ask
about our new
designs.



Product Information - ABS Front & Rear Axle Covers

All Kits Include:

- 10 ABS Chrome Nut Covers (see Styles)
- One-Piece/Two-piece ABS Axle Cover/Cap Assembly
- Plastic Rim Protector
- Steel Locking Washer (for 'Push-On' style only)



Twist-on (Threaded) Nut Covers - Threaded nut covers are the preferred method for securing the ABS Hub Cover to the wheel. Interior threads on the Nut Cover attach securely to the wheel studs, holding the entire assembly onto the wheel.

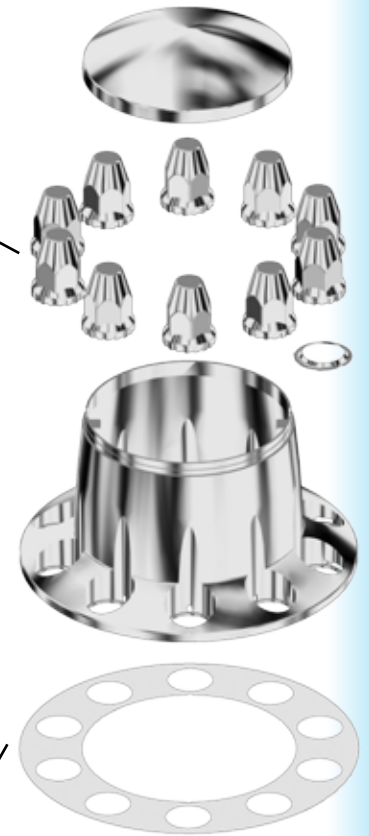
Push-On Nut Covers - These nut covers are designed for applications when insufficient thread exists on the wheel studs for a secure fit.

Retaining Washer - Used with Push-On style Nut Covers to secure the Hub Cover to the wheel. 2 are included with ABS kits specified with Push-On nut covers.

Removable Cap - Allows access to the assembly without the need to remove the wheel cover. All models of our Rear ABS Axle Covers feature a removable cap.

Non-Removable Caps - For applications where access to the axle is not required, or when the wheels will be exposed to extreme conditions such as commonly found on construction sites and other off-road situations.

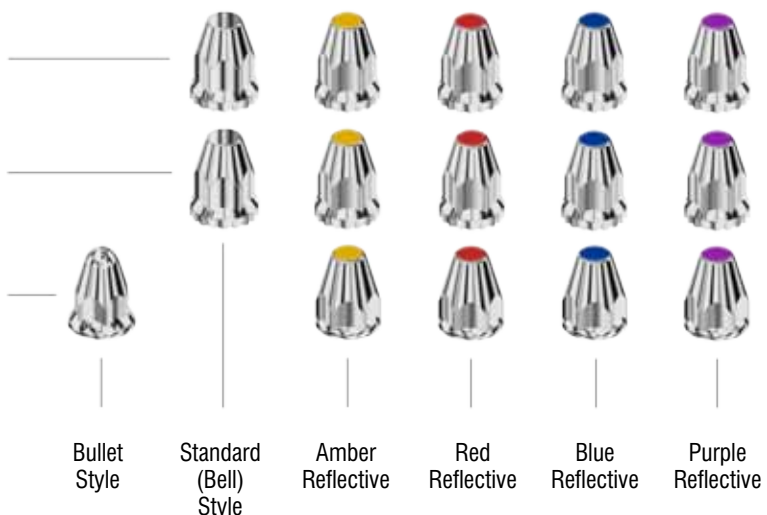
Plastic Rim Protector - These clear plastic Rim Protectors are included with all ABS Wheel Cover kits to protect the rims of aluminum wheels from abrasive damage and wear marks.



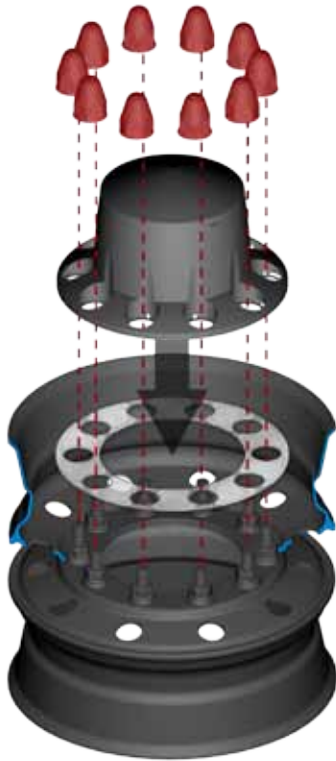
33mm Threaded Nut Covers - Installed by threading onto the exposed stud above the wheel lug nut.

33mm Push-On Nut Covers - Secured onto the wheel by friction fitting over the wheel lug nut. Use when studs are too short to provide a positive grip.

1.5" Push-On Nut Covers - Secured onto the wheel by friction fitting over the wheel lug nut.



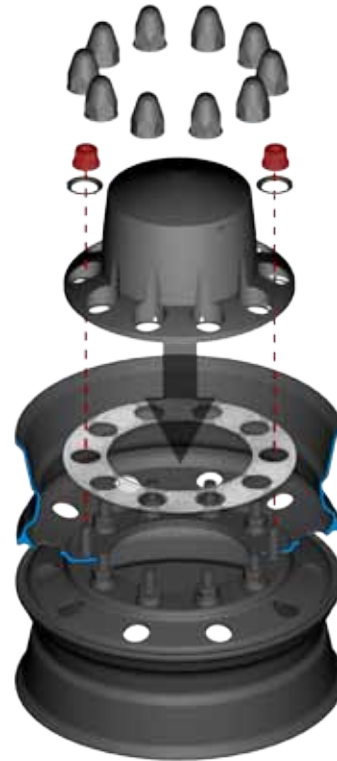
Product Information - ABS Rear Axle Cover Replacement



Twist-On

Installation- Place the Rim Protector, followed by the ABS Hub Cover over the existing lug nuts. Holding the ABS Hub Cover flush with the face of the wheel, twist the ABS nut covers onto the exposed studs until tight. A light clicking sound will indicate that the locking action is working, which will secure the lug nut covers in place.

Lug Nut removal is not required!



Push-On

Installation- Remove two lug nuts from the wheel, on opposite sides. Place the Rim Protector, followed by the ABS Axle Cover over the existing lug nuts. Replace the two lug nuts removed earlier, using the supplied locking washers to secure the Axle Cover to the wheel. Torque the nuts as usual to complete installation.

Product Information - Rear Axle Covers

Class 7 and 8 truck wheels attach to the axle and hub in one of two ways; **Hub-Piloted** and **Stud Piloted**, as the drawing below shows. Aluminum wheels are typically hub-piloted, and steel wheels are typically stud-piloted. When determining which product to select for your application, it is important to correctly identify the type of wheel and the method of installation for your wheels for a secure and accurate fit.

Products that attach using the lug nuts to secure the product to the wheel, such as beauty rings, hub covers, and wheel simulators specify which application they are intended for. This does not apply however, to our line of ABS axle covers, which are universal and can mount to any style wheel.

Installation Notes



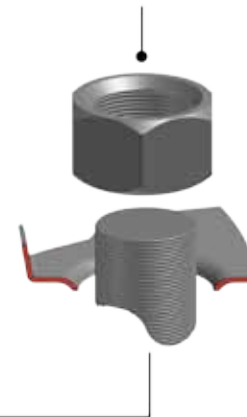
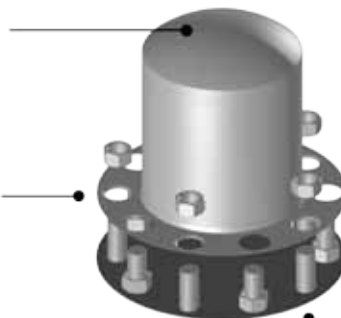
To maximize the life and look of your new American Chrome® Wheel and Hub Covers, it is important not to over-torque the lug nuts during installation. Over-torquing can result in premature failure of the product, or the development of cracks around the lug holes due to compression and metal fatigue.

1.5" Lug Nuts - Most Stud-Piloted wheels use a 1.5" lug nut, with a conical face that helps center the wheel as it is tightened. Products designed to attach using these lug nuts feature a tapered opening to accommodate the conical face of the lug nut, as shown below.

Stud-Piloted

Removable Caps - Many of our Rear Wheel products feature a removable cap, allowing easy access to the hub for maintenance.

Lug Holes - There are usually ten (10) lug holes located around the perimeter of the Beauty Ring. For Stud-Piloted applications, there are five 1.25" tapered holes, and five 1.75" flat holes that slip over existing lug nuts.



Hub-Piloted

33mm Lug Nuts - Most Hub-Piloted wheels use a 33mm lug nut, with a flat face. The lug nuts usually incorporate an integral washer at the base.



Removable Caps - Many of our Rear Wheel products feature a removable cap, allowing easy access to the hub for maintenance.

Lug Holes - There are usually ten (10) lug holes located around the perimeter of the Beauty Ring. For Hub-Piloted applications, there are five 1" flat holes, and five 1.88" flat holes that slip over the existing lug nuts. As with all our wheel products, it is only necessary to remove five of the lug nuts for proper installation.

